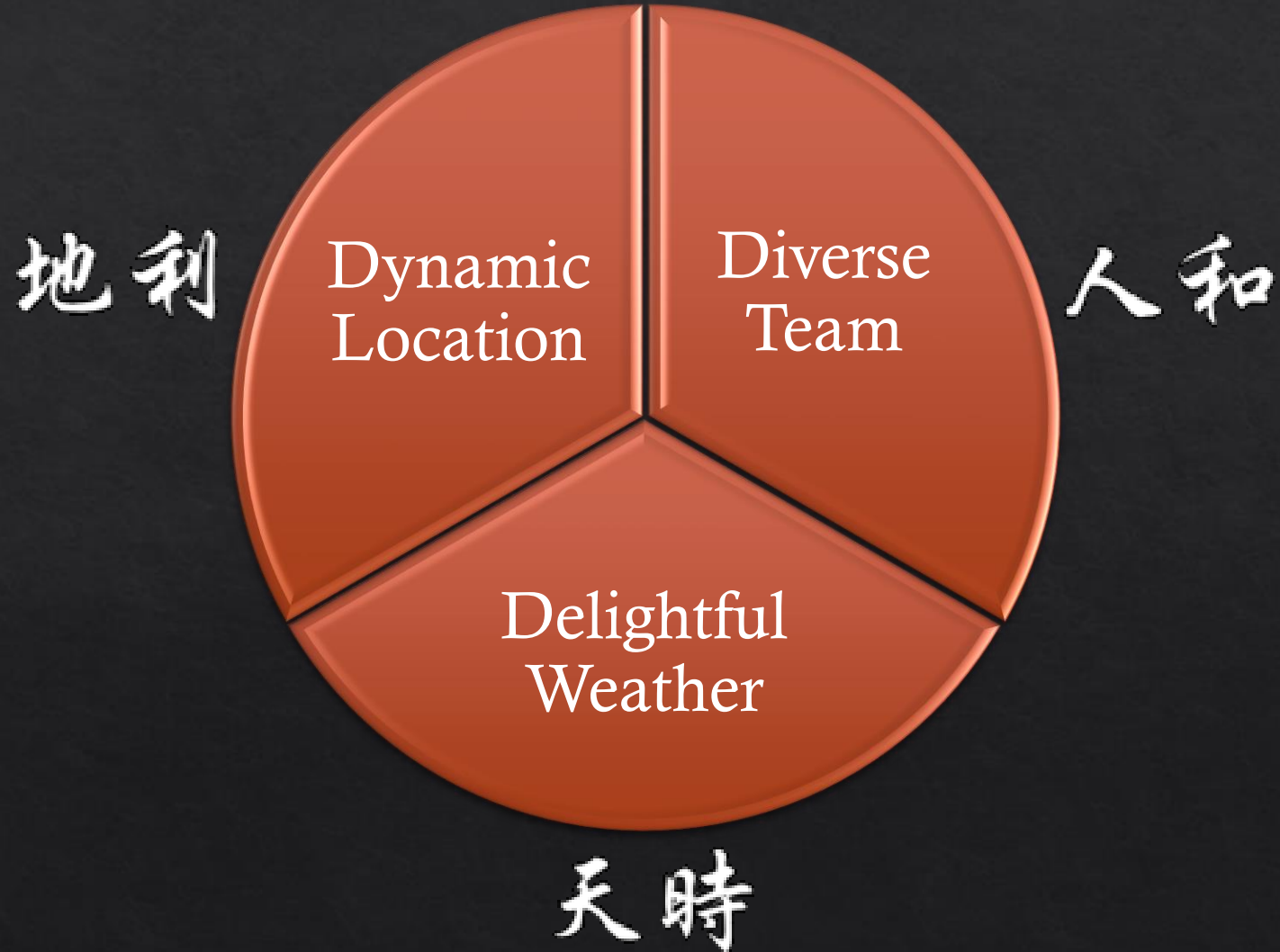


An aerial photograph of the Shenzhen skyline, featuring numerous skyscrapers and modern buildings. In the foreground, a large, modern architectural complex with a distinctive white, curved roof structure is visible, surrounded by greenery and a wide, paved plaza. The text "Bring ICCV 2025 to Shenzhen, Greater Bay Area, China" is overlaid in a large, bold, yellow font, with "December 14-20, 2025" in a smaller, bold, yellow font below it.

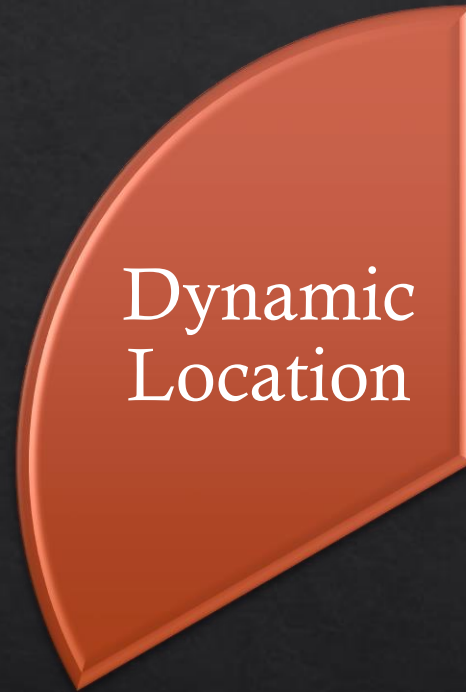
Bring ICCV 2025 to Shenzhen, Greater Bay Area, China

December 14-20, 2025

In Three Words -- Why Shenzhen 2025?



Dynamic Location for ICCV25'



Shenzhen and The Greater Bay Area

Shenzhen

The City of Kun-Peng

鹏城



The Greater Bay Area



Zhaoqing



Foshan



Zhongshan



Jiangmen



Zhuhai



Guangzhou



Huizhou



Dongguan



Shenzhen



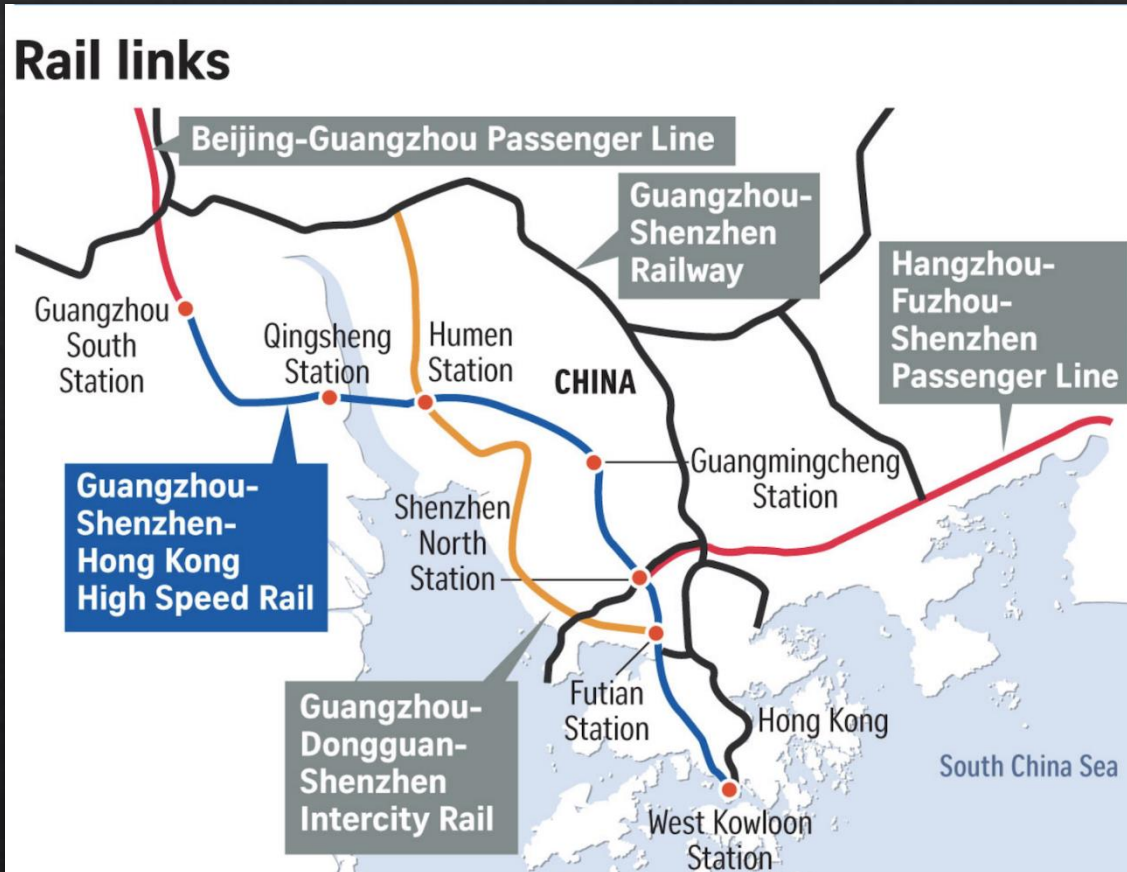
Hong Kong



Macao

● Core Cities ■ Key Node Cities

High-Speed Train



Commute between Shenzhen and major cities

- ◇ Guangzhou
 - ◇ 29 minutes by high speed train
- ◇ Hong Kong
 - ◇ 18 minutes by high speed train every 15 minutes
- ◇ Macau and Zhuhai
 - ◇ Linked by Ferry and HZM bridge

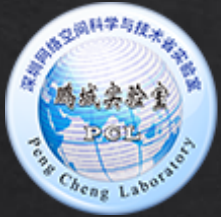
HMZ Bridge: The World's Longest Sea-Crossing Bridge (34 miles)



The world's longest sea-crossing bridge (34 mi) linking Hong Kong, Macau and Zhuhai with an undersea tunnel and four artificial islands

Active Local Community

- ◆ A great place to involve and interact with the fastest growing community of institutes, universities and many high-tech companies headquartered at Shenzhen



PENG CHENG LABORATORY



Industrial Sponsorships

With strong supports from the local community



Industrial Sponsorships for
More Travel Supports

- ✓ 400+ Travel Grants
- ✓ Onsite daycares



Onsite Career Fair Sponsored
by Companies

- ✓ Global giants
headquartered in Shenzhen



Exhibitions on Vision-Enabled
Technologies

- ✓ 120+ exhibition booths
- ✓ Many computer vision startups

Delightful Weather for Travels



Proposal: Location and Date

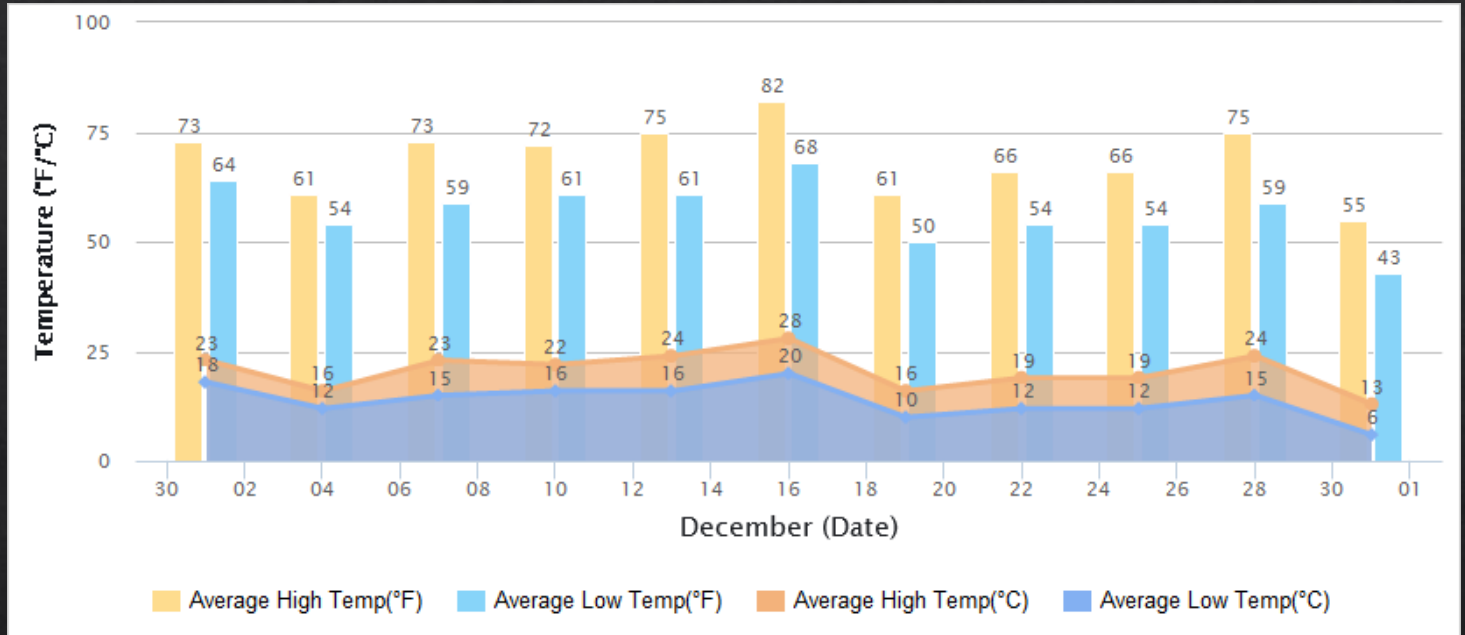
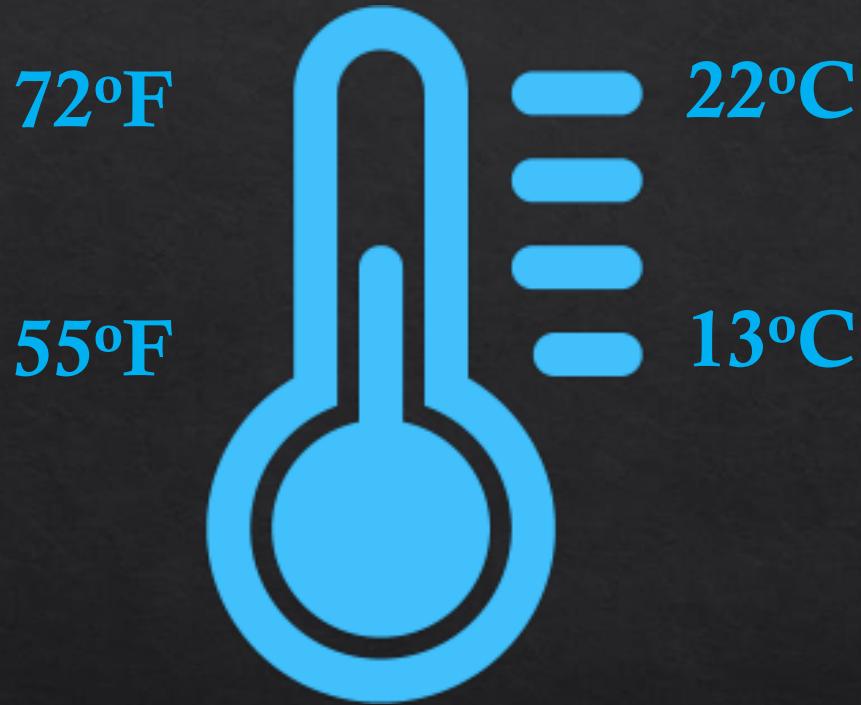


◇ Location: Shenzhen, China

◇ Date: December 14-20, 2025



Pleasant Winter in The Greater Bay Area



Shenzhen • Greater Bay Area



Xichong Beach • Shenzhen

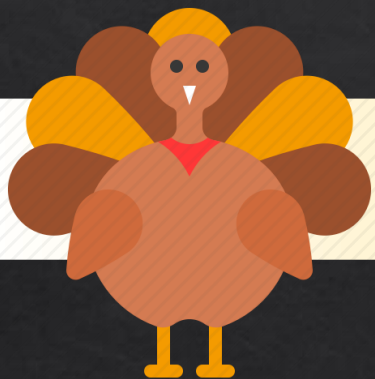


Sands • Macau

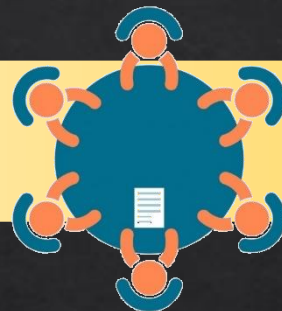


Disneyland • Hong Kong

Pre-and-Post Conference Social Activities



**Holiday season starts
in late November**



**ICCV25: December
14-20, 2025**



Happy New Year!

New Year Holiday



Colorful Culture and Activities



Xichong Beach



Overseas Chinese Town East



Camping on Xichong Beach



Window of the World



Folk Culture Villages



Sunbathing on Dameisha Beach

Attractions

◆ Shenzhen

- ◆ Beaches (Xiaomeishao, Xichong etc.)
- ◆ Splendid China Culture Village
- ◆ Huaqiangbei (World's largest marketplace of electronics)
- ◆ More ...

◆ Hong Kong (18 min by high speed train)

- ◆ Disneyland
- ◆ The Peak
- ◆ Lan Kwai Fong
- ◆ More ...

◆ Macau (linked through HZM bridge)

- ◆ The Venetian
- ◆ Macau Tower
- ◆ Ruins of St. Paul's
- ◆ More ...

Traditional Cultures



Natural Sceneries



Modern energies



Family Friendly

Cities in The Greater Bay Area



Guangzhou (29 min)



Hong Kong (18 min)



Shenzhen



Zhuhai (by HZM bridge)



Macau (by HZM bridge)

Shenzhen



Dameisha Beach



Rose Beach



Xiaomeisha Beach



Xichong Beach



Crane Lake Hakka Village



Splendid China Culture Village



Splendid China Cultural Performing Arts



World's Largest Marketplace of Electronics: Huaqiangbei



Cities in The Greater Bay Area



Guangzhou (29 min)



Hong Kong (18 min)



Zhuhai (by HZM bridge)



Shenzhen



Macau (by HZM bridge)

Guangzhou



Guangzhou



Guangzhou Opera House



Traditional Chinese Medicine Market



Fall Of Canton Tower



Buddhist Rituals at Guangxiao Temple



Pearl River Night Cruise

Cities in The Greater Bay Area



Guangzhou (29 min)



Hong Kong (18 min)



Zhuhai (by HZM bridge)



Shenzhen



Macau (by HZM bridge)

Macau • Zhuhai

Sands • Macau



Jiuzhou Port • Zhuhai



Cities in The Greater Bay Area



Guangzhou (29 min)



Hong Kong (18 min)



Zhuhai (by HZM bridge)



Shenzhen



Macau (by HZM bridge)

Hong Kong



Disneyland



Victoria Harbour



Victoria Peak



Lan Kwai Fong

Dining and Cuisine

World's Capital of Dim Sum



Morning Tea



Yue Cai (Cantonese Cuisine)



Vegetarian

Shenzhen Bao'an International Airport



24 airlines serving **83** non-stop domestic airports and **22** non-stop international destinations



Nearby Airport: Hong Kong International Airport



150 non-stop domestic and international destinations in **45** countries/areas, with direct airport shuttle services to Shenzhen.

Diverse Team



In Memory of Prof. Thomas S. Huang

- ◇ In Memory of Prof. Thomas Huang
- ◇ Prof. Huang agreed to serve as an honorary chair, who unfortunately passed away in April 2020.



Huang, Thomas S.
University of Illinois
(1936-2020)

The Team

Experienced, capable, diverse, responsive, passionate

Honorary Chairs



Chellappa, Rama
University of
Maryland



Gao, Wen
Peking University &
Peng Cheng Lab



Shapiro, Linda
University of
Washington

The Team

Experienced, capable, diverse, responsive, passionate

General Chairs



Chen, Xilin
Institute of Computing
Technology, CAS



Luo, Jiebo
University of Rochester



Shah, Mubarak
University of Central
Florida



Van Gool, Luc
ETH Zurich & KU
Leuven

The Team

Experienced, capable, diverse, responsive, passionate

Program Chairs



Akata, Zeynep
University of Tübingen



Hays, James
Georgia Tech



Leibe, Bastian
RWTH Aachen University



Qi, Guo-Jun
Futurewei Technologies



Shen, Chunhua
University of Adelaide

The Team

Experienced, capable, diverse, responsive, passionate

Finance Chairs



Camps, Octavia
Northeastern
University



Shan, Shiguang
Institute of Computing
Technology, CAS

Local Chairs



Liang, Xiaodan
Sun Yat-sen University

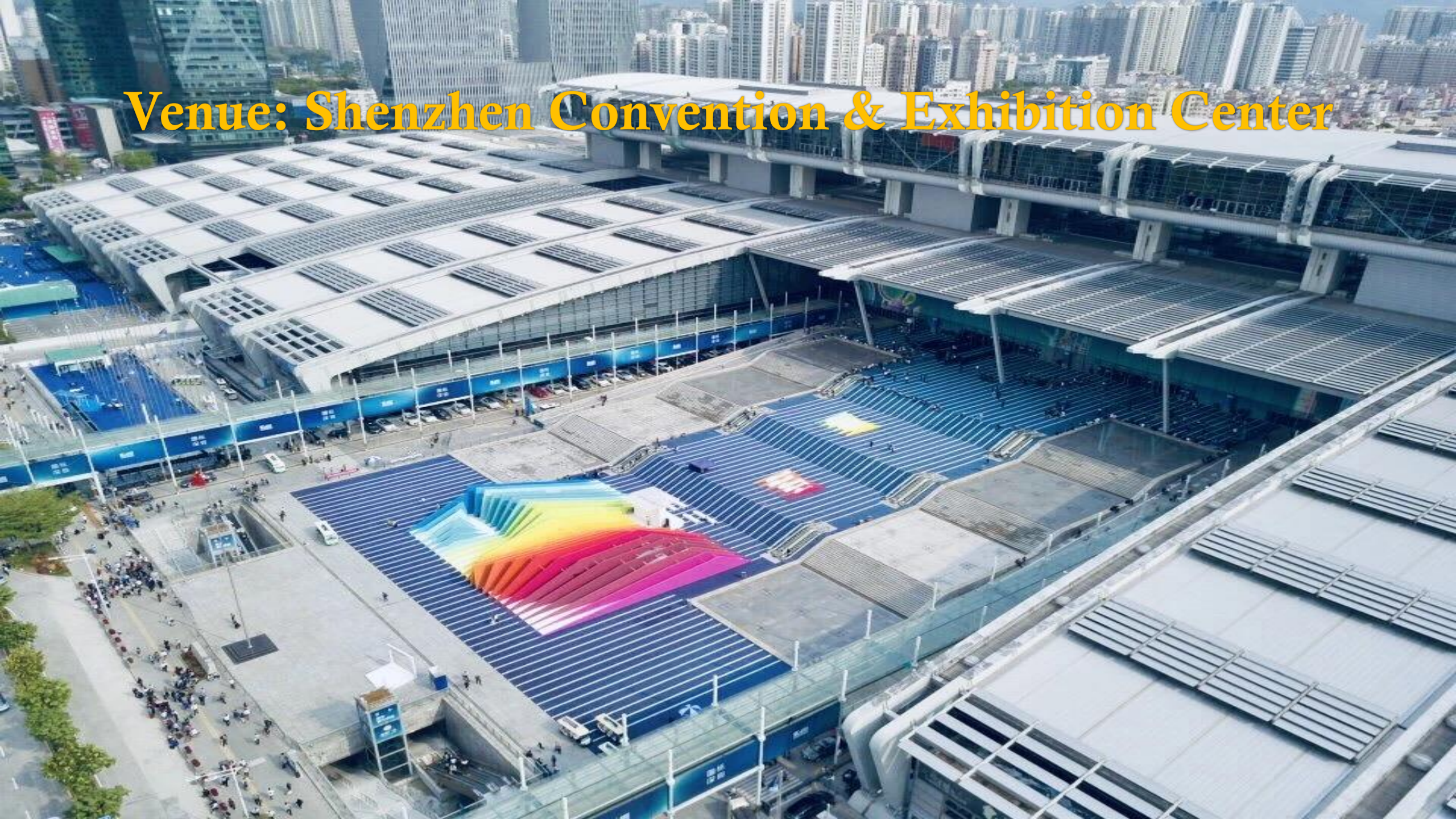


Ni, Dong
Shenzhen University

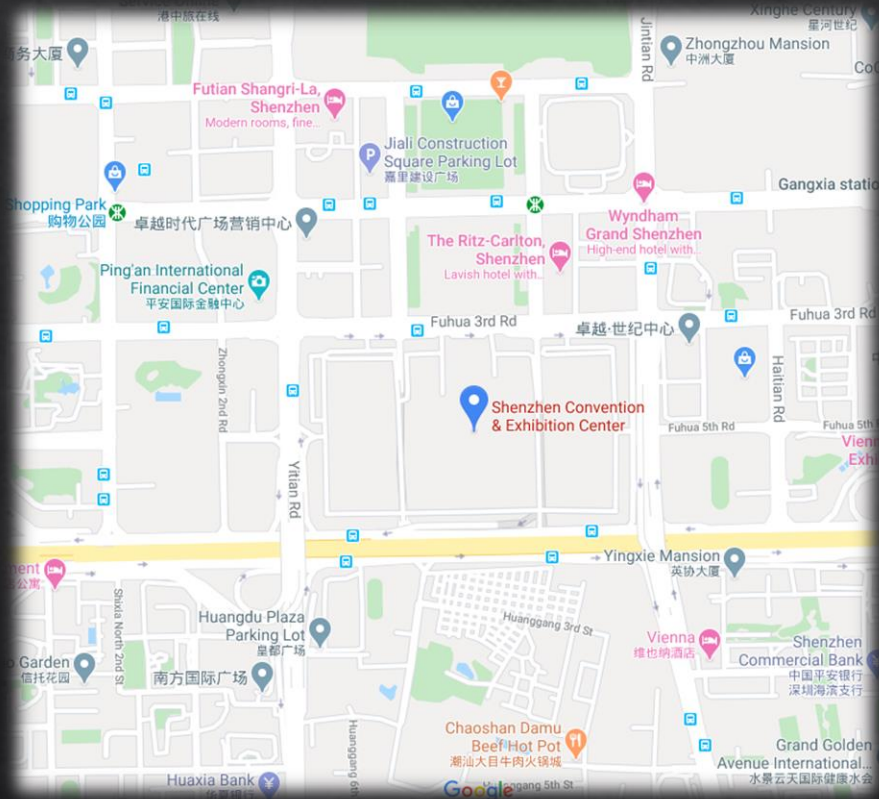


Tian, Yonghong
Peking University &
Peng Cheng Lab

Venue: Shenzhen Convention & Exhibition Center



Location and Transportation



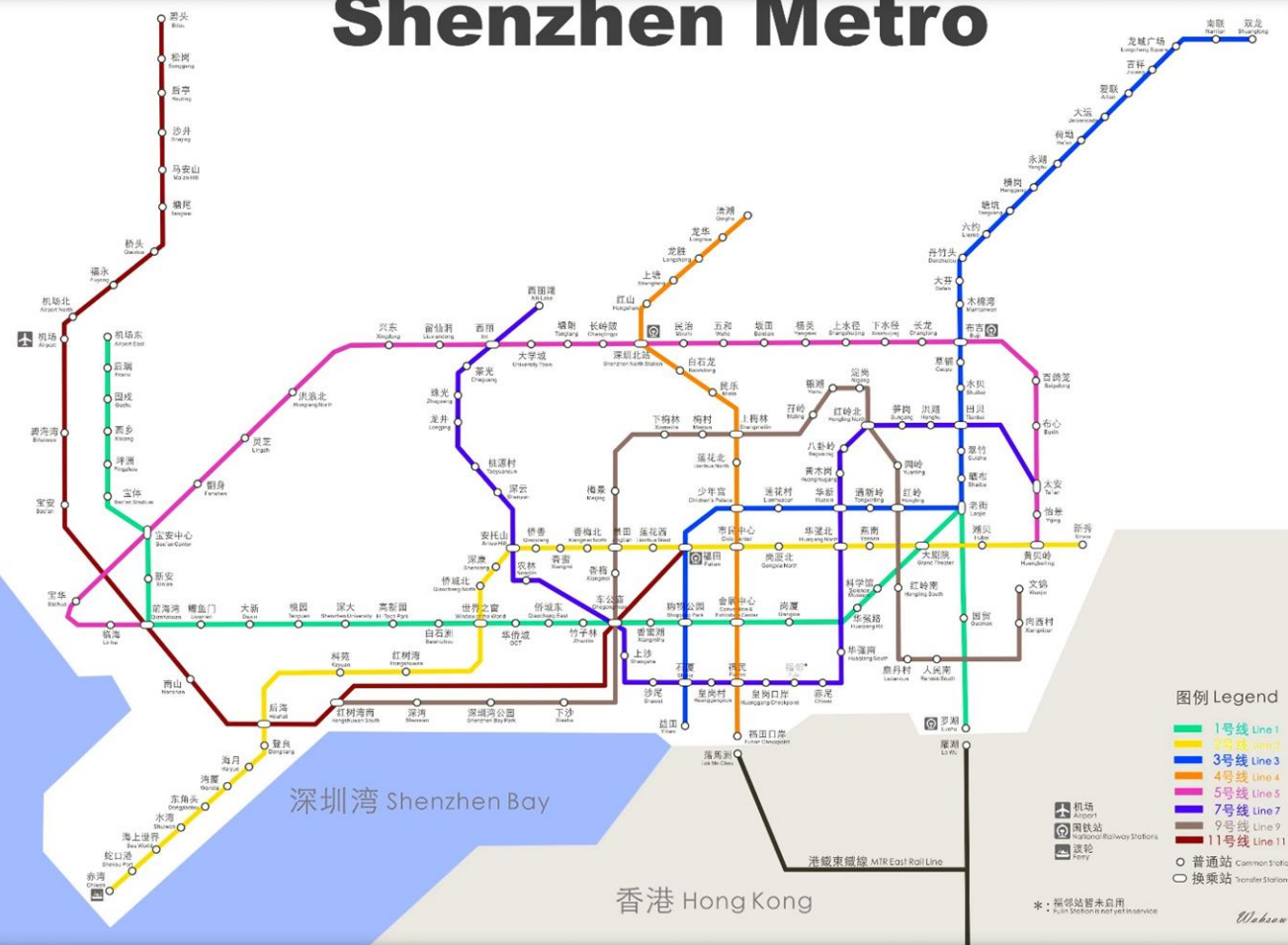
Shenzhen Convention & Exhibition Center

- ◇ Adjacent to subway station where Line 1, 4 and 11 meet;
- ◇ More than 20 bus lines connecting the whole city;
- ◇ 30min to SZ International Airport by car;
- ◇ Metro line 11 directly to the airport with 7 stops;
- ◇ 5 min to Futian & Huanggang Ferry Terminal by car;
- ◇ 5-10 mins. by walk to large commercial plaza.

Shenzhen Subway

304 km long, 8 lines and 215 stations

Shenzhen Metro

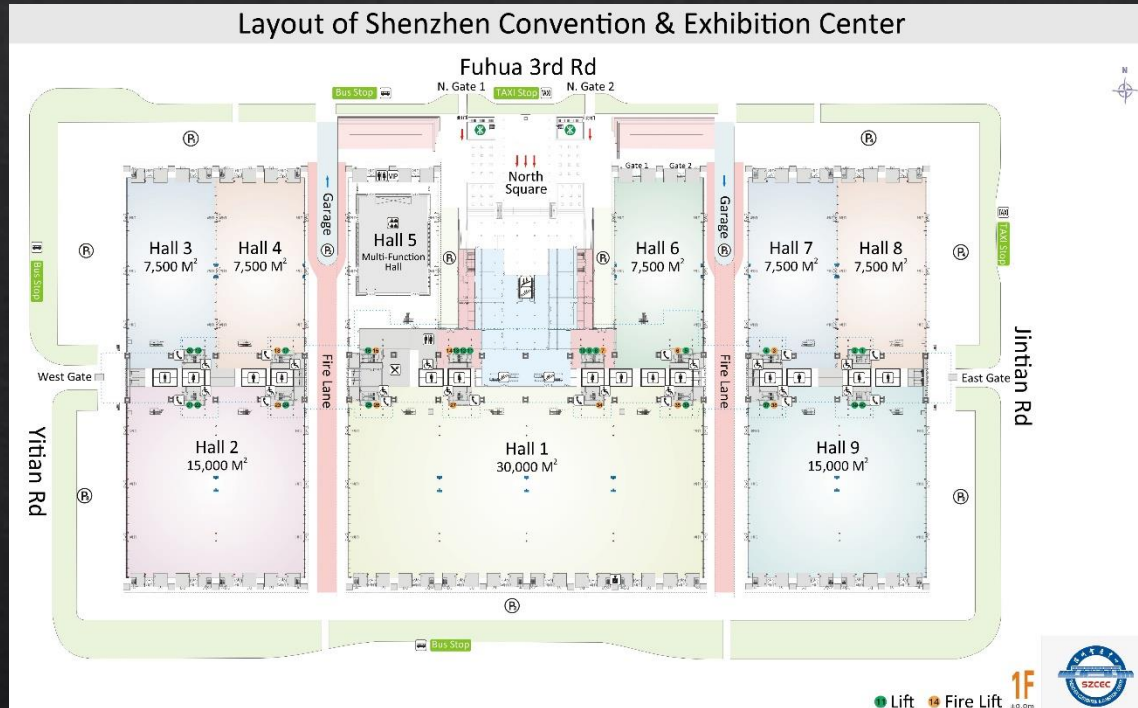


Hotels Near Venue

Meet various accommodation needs

Hotel	Straight distance from the convention center	Room type	Nightly rate (in Chinese Yuan)
Four Seasons Hotel Shenzhen	0.23 km	Deluxe room (Double/Twin)	1600
		Executive Suite	2100
The Ritz-Carlton Shenzhen	0.3 km	Deluxe room (Double/Twin)	1550
		Executive Suite	2900
Sheraton Shenzhen Futian Hotel	0.51 km	Deluxe room (Double/Twin)	1000
		Executive Suite	1800
Futian Shangri-La Hotel	0.58 km	Deluxe room (Double/Twin)	1200
		Executive Suite	2600
Vienna Hotel	0.72 km	Deluxe room	350
Jinzhonghuan Hotel	0.44 km	standard room	300
Aegean Art Hotel	0.72 km	standard room	320

Meeting Space



- ◇ One (1) 15,000 m² Grand Hall Room
- ◇ One (1) 7,500 m² Grand Ballroom
- ◇ One (1) 3,000 m² Multi-Function Hall
- ◇ Meeting rooms on 3rd, 5th, 6th floor for breakout sessions (W&T)
- ◇ More spaces for poster sessions

Floor Plan

Room #	Used for	Size	Theater	Classroom	Banquet
Hall 2 (Hall 2A&2B)	Opening ceremony, keynote/oral sessions	15,000 m ²	12,000	5,800	9,000
Hall 4 (Hall 4A&4B)	Exhibitions (80-120 booths) & Poster session 1	7,500 m ²	6,000	2,900	4,500
Hall 5	Poster session 2, W&T, and Coffee breaks	3,000 m ²	2,200	1,100	1,700
Rooms on 3 rd , 5 th , 6 th Floor	breakout sessions (W&T)	90-1,847 m ²	70-1200	40-600	72-960



Proposed Agenda and Meeting Spaces

Proposed ICCV 25 Agenda & Meeting Spaces					
December 14-15, December 20, 2025	10-20 breakout sessions for Tutorials & Workshops (Multiple meeting rooms in Hall 5 & on 3 rd , 5 th , 5 th floors)				
December 16, 2025 (Main Conference Day 1)	Opening Ceremony & Award Session (Hall 2)				
	Oral Session 1 (Hall 2A)	Oral Session 2 (Hall 2B)	Poster Session 1 (Hall 4A)	Poster Session 2 (Hall 5)	Exhibitions (Hall 4B)
	Reception (Hall 2)				
	CVF/PAMI TC Meeting (Hall 2)				
December 17, 2025 (Main Conference Day 2)	Keynote Session (Hall 2)				
	Oral Session 1 (Hall 2A)	Oral Session 2 (Hall 2B)	Poster Session 1 (Hall 4A)	Poster Session 2 (Hall 5)	Exhibitions (Hall 4B)
	Banquet (Hall 2)				
December 18-19 (Main Conference Day 3-4)	Keynote Session (Hall 2)				
	Oral Session 1 (Hall 2A)	Oral Session 2 (Hall 2B)	Poster Session 1 (Hall 4A)	Poster Session 2 (Hall 5)	Exhibitions (Hall 4B)

Virtual Conference

- ◆ Virtual conferences become an integral part (not a substitute) of future events
- ◆ All papers can be presented virtually
- ◆ Increase visibility of works beyond physical conferences
- ◆ Online Q&A follows physical conferences
- ◆ Best “online” presentation award

Why Shenzhen for ICCV 2025?

- ◆ Large computer vision community in Shenzhen and the Greater Bay Area;
- ◆ World-class conference infrastructure secured;
- ◆ A pleasant place with nice weather, lots of attractions, and sophisticated cuisine;
- ◆ Easy to travel from to around the world, as well as within the Greater Bay Area;
- ◆ Affordable, with family support.

A Short Video about Shenzhen

◇ Play at Youtube.com

<https://www.youtube.com/embed/kahd3KmNsOE>

◇ Play at Bilibili.com

<https://www.bilibili.com/video/BV1sW411n7EJ/>

A nighttime photograph of the Shenzhen skyline, featuring the Zhenhua Tower (formerly China Resources Tower) as the central focal point. The tower is illuminated with blue and white lights, standing out against the dark sky. Other skyscrapers and city lights are visible in the background, reflecting on the water in the foreground. The overall scene is vibrant and modern.

Thank You
We are welcoming you at
Shenzhen in 2025